

The background is a solid red color with several decorative elements: a large gear icon in the center, several concentric white circles, and clusters of small white dots in the corners.

SK hynix
Drive Manager Easy Kit
Installation Guide

Legal Notice

This document is provided for informational purposes only, and does not constitute a binding legal document. Information in this document may change from time to time; SK hynix Inc. ("SK hynix") makes no commitment to provide any updates to this document, in a timely manner or at all.

Please note that this document constitutes part of the files that are licensed to you by SK hynix together with the applicable software, and is subject to the End User License Agreement between you and SK hynix governing your use of the software, its associated files and this document ("License Agreement").

Please read the License Agreement carefully, as it governs what you may and may not do, and sets out SK Hynix' s disclaimer of warranty and liability. If you do not agree with the License Agreement, please do not use the software and its files, including this document.



Table of Contents

1	Introduction	5
2	Requirements	6
3	Standard Installation	7
3.1	Run the setup File	7
3.2	Start the Installation	7
3.3	Accept the License Agreement	7
3.4	Select the Installation Directory	8
3.5	Finish the Installation Process	8
3.6	How to upgrade the Firmware	10
4	Launching SK hynix Drive Manager Easy Kit	12
5	Uninstalling SK hynix Drive Manager Easy Kit	14





1. Introduction

SK hynix Drive Manager Easy Kit is intended to provide users with detailed information on SSDs (mainly SK hynix drives), update firmware, erase drives, generate drive performance reports, and monitor drives.)

This document provides instructions on how to install/uninstall and launch SK hynix Drive Manager Easy Kit on Windows in a standard mode.

Before installing SK hynix Drive Manager Easy Kit, check whether your system meets the requirements.





2. Requirements

Item	Requirements
Operating System	Windows Server 2012 x64 Windows 10 x86/x64 Windows 8 x86/x64 Windows 8 x86/x64 Windows 8.1 x86/x64 Windows 7 x86/x64(SATA Only)
Interface	SATA,PCIe
Drives	SK hynix Drive Manager Easy Kit supports all SSDs and HDDs but all features are available only for SK hynix SSDs.

Note : Administrator access privileges are required for installing and accessing SK hynix Drive Manager Easy Kit.

3. Standard Installation

This section provides standard installation instructions for SK hynix Drive Manager Easy Kit in the Windows environment. The installation package installs in GUI.

3.1 Run the setup File

To run Drive Manager Easy Kit, please click the setup file.


Name	Date modified	Type	Size
 DriveManager-C2.1.0-windows-installer-...	8/3/2020 11:03 PM	Application	166,648 KB

Figure1. Run the set up file

3.2 Start the Installation

To start the installation process, click **Next** when the **Setup** dialog appears.

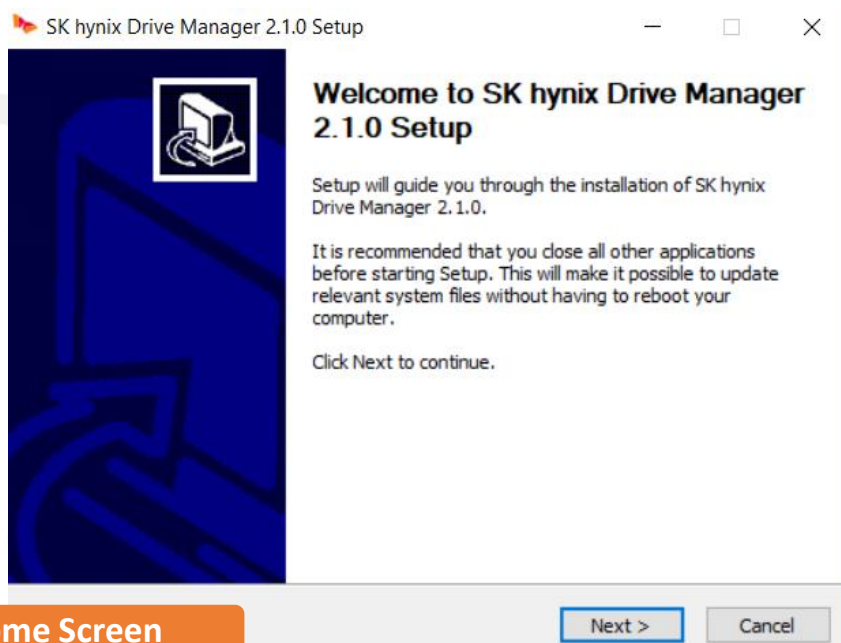


Figure2. Welcome Screen

3.3 Accept the License Agreement

Read the License Agreement, and to continue the installation, click **I Agree**.

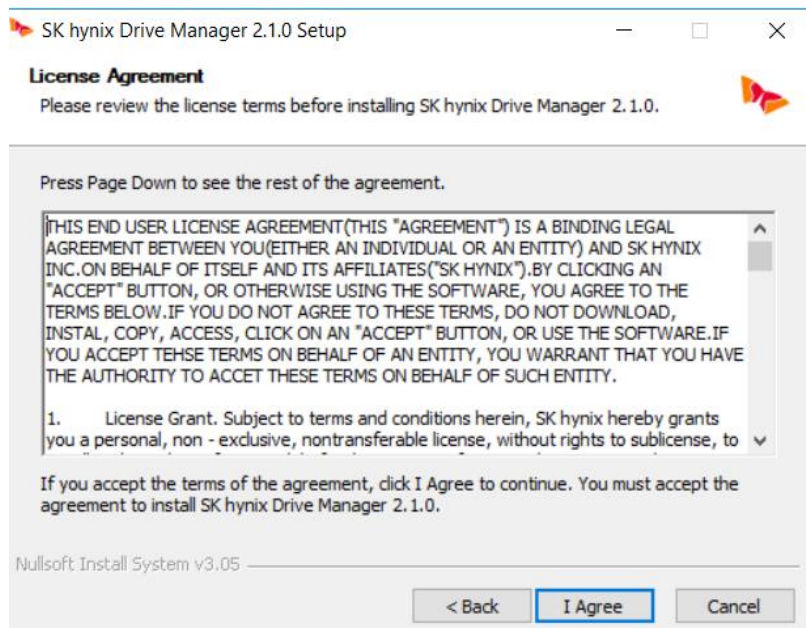


Figure3. License Agreement

3.4 Select the Installation Directory

To select the installation directory :

- Click **Next** to install the application into the default directory
C:/program Files (X86)/SK hynix Drive Manager

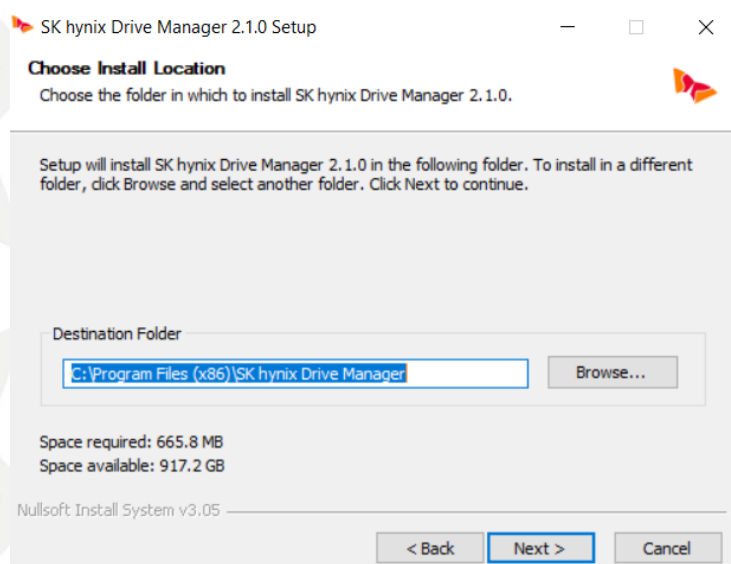


Figure4. Installation Directory

or

- In the **Installation Directory** field, enter the required directory, and then click **Next**.

or

- Click the browse button, and in the **Browse for Folder** dialog, select the folder for the application to be installed in, and click **OK**.

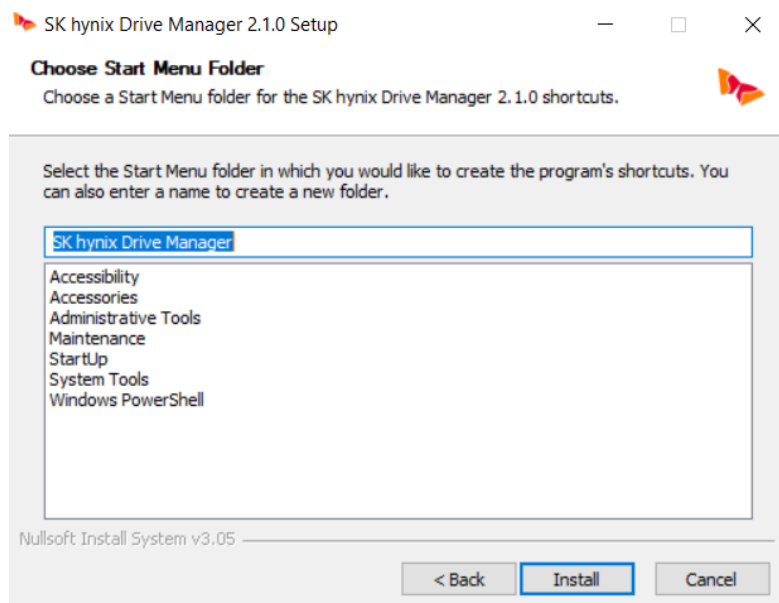


Figure5. Browse for Folder

3.5 Finish the Installation Process

When the installation is completed, click **Finish**.

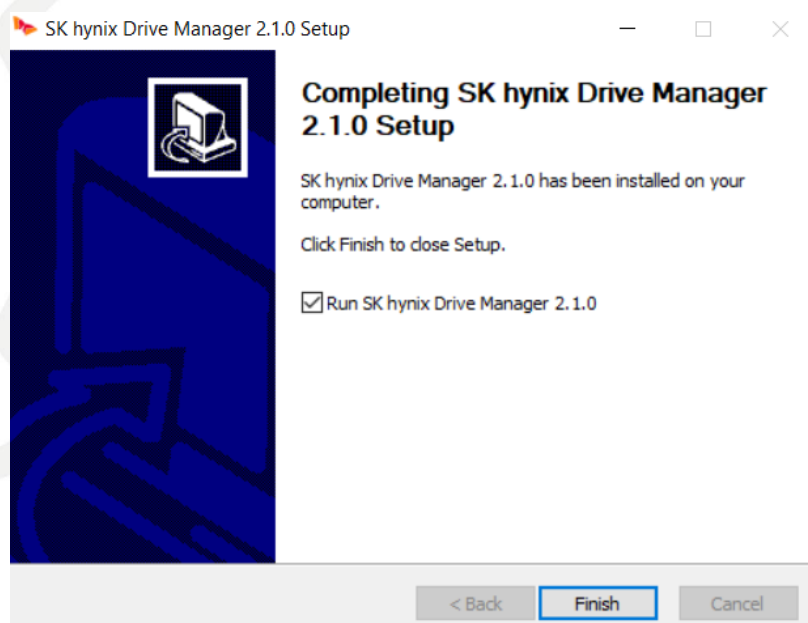


Figure6. Finish the Installation



3.6 How to upgrade the Firmware

1) Click on the **SK Hynix SDD** that you installed.

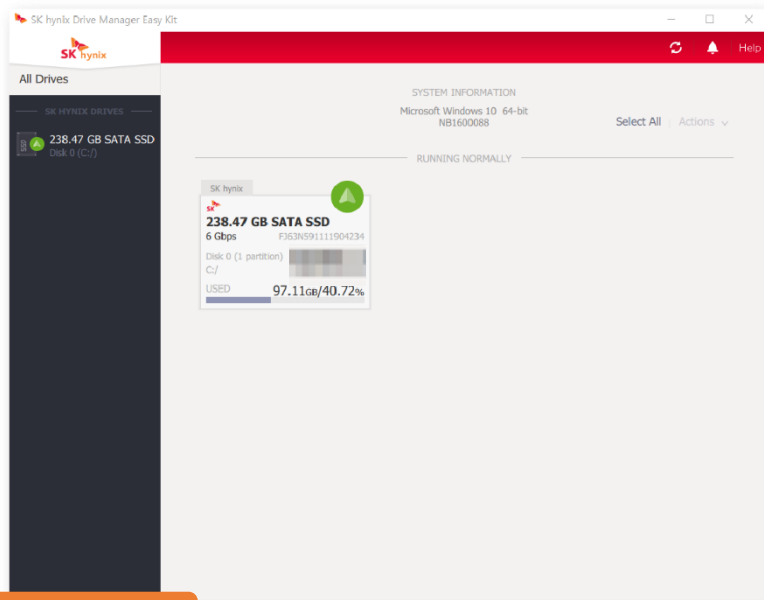


Figure7. Find a Product

2) Click **update firmware**.

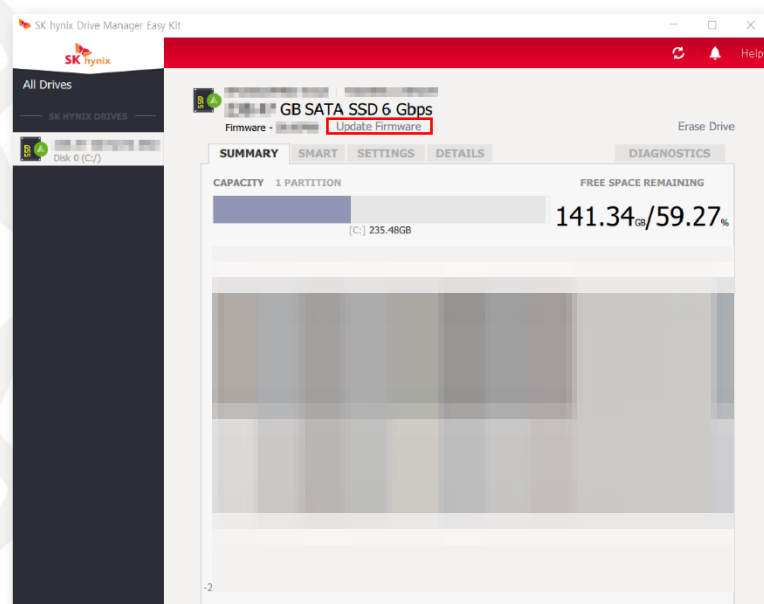


Figure8. Update Firmware



- 3) When this page appears, find the FW that you downloaded then **click on the upload to 1 drive.**

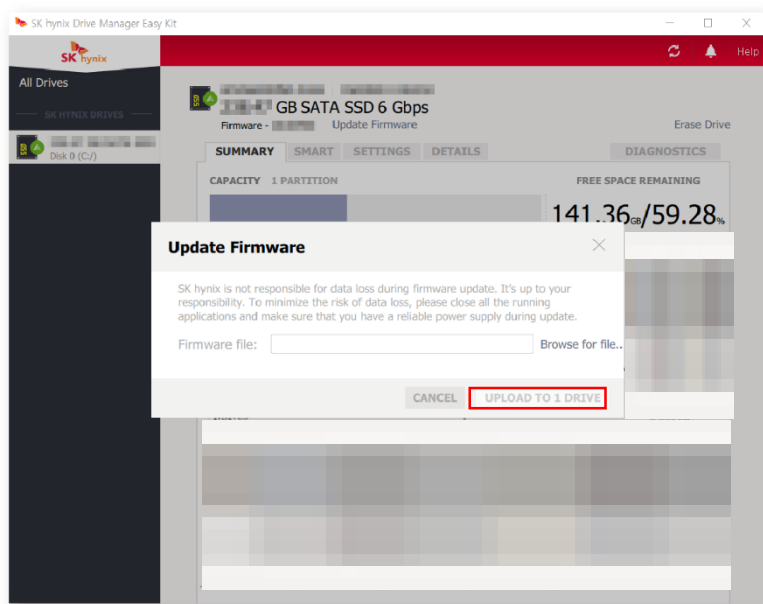


Figure9. Upload to 1 drive



4. Launching SK hynix Drive Manager Easy Kit

To launch the program from the Start menu:

1. For Windows 7, 10:

In the **Start** menu, click **All programs** (Windows 7) / **All Apps** (Windows 10), and then open the **SK hynix** folder.

For Windows 8, 12:

a. Press the Windows key  on your keyboard to open the **Start** screen.

b. To get the all **Apps** view :

Click the arrow button 

or

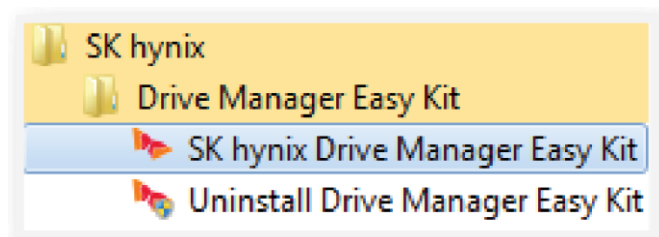
Right click on the **Start** screen, and then click the **All Apps** button at the bottom of the screen.





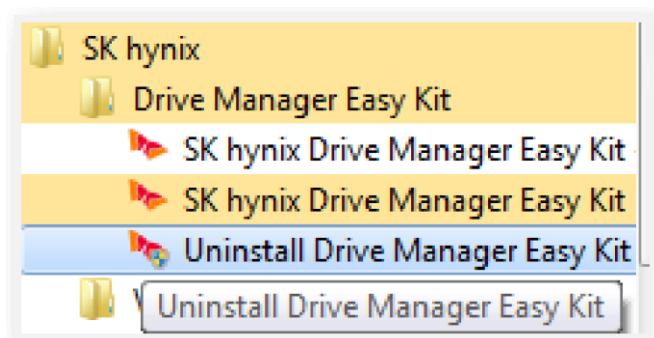
c. Find the **SK hynix** folder.

2. Click the **Drive Manager Easy Kit** folder, and then click **SK hynix Drive Manager Easy kit** or **SK hynix Drive Manager Easy Kit - Command** :



5. Uninstalling SK hynix Drive Manager Easy Kit

To uninstall the application, in the directory where the installed files are located, find and run the *Uninstall Drive Manager Easy Kit* :



-Disclaimer

<Open source Software>

7z.dll

Copyright (C) 1999-2021 Igor Pavlov.

BSD 3-clause License

The "BSD 3-clause License" is used for the code in 7z.dll that implements LZFSE data decompression.

That code was derived from the code in the "LZFSE compression library" developed by Apple Inc, that also uses the "BSD 3-clause License":

Copyright (c) 2015-2016, Apple Inc. All rights reserved.

Redistribution and use in source and binary forms, with or without modification, are permitted provided that the following conditions are met:

1. Redistributions of source code must retain the above copyright notice, this list of conditions and the following disclaimer.
2. Redistributions in binary form must reproduce the above copyright notice, this list of conditions and the following disclaimer in the documentation and/or other materials provided with the distribution.
3. Neither the name of the copyright holder(s) nor the names of any contributors may be used to endorse or promote products derived from this software without specific prior written permission.

THIS SOFTWARE IS PROVIDED BY THE COPYRIGHT HOLDERS AND CONTRIBUTORS "AS IS" AND ANY EXPRESS OR IMPLIED WARRANTIES, INCLUDING, BUT NOT LIMITED TO, THE IMPLIED WARRANTIES OF MERCHANTABILITY AND FITNESS FOR A PARTICULAR PURPOSE ARE DISCLAIMED. IN NO EVENT SHALL THE COPYRIGHT HOLDER OR CONTRIBUTORS BE LIABLE FOR ANY DIRECT, INDIRECT, INCIDENTAL, SPECIAL, EXEMPLARY, OR CONSEQUENTIAL DAMAGES (INCLUDING, BUT NOT LIMITED TO, PROCUREMENT OF SUBSTITUTE GOODS OR SERVICES; LOSS OF USE, DATA, OR PROFITS; OR BUSINESS INTERRUPTION) HOWEVER CAUSED AND ON ANY THEORY OF LIABILITY, WHETHER IN CONTRACT, STRICT LIABILITY, OR TORT (INCLUDING NEGLIGENCE OR OTHERWISE) ARISING IN ANY WAY OUT OF THE USE OF THIS SOFTWARE, EVEN IF ADVISED OF THE POSSIBILITY OF SUCH DAMAGE.

Jquery

Copyright 2011, John Resig

Dual licensed under the MIT or GPL Version 2 licenses.

<http://jquery.org/license>

Includes Sizzle.js

Copyright 2011, The Dojo Foundation

Released under the MIT, BSD, and GPL Licenses.

MIT Licenses

Permission is hereby granted, free of charge, to any person obtaining a copy of this software and associated documentation files (the "Software"), to deal in the Software without restriction, including without limitation the rights to use, copy, modify, merge, publish, distribute, sublicense, and/or sell copies of the Software, and to permit persons to whom the Software is furnished to do so, subject to the following conditions:

The above copyright notice and this permission notice shall be included in all copies or substantial portions of the Software.

THE SOFTWARE IS PROVIDED "AS IS", WITHOUT WARRANTY OF ANY KIND, EXPRESS OR IMPLIED, INCLUDING BUT NOT LIMITED TO THE WARRANTIES OF MERCHANTABILITY, FITNESS FOR A PARTICULAR PURPOSE AND NONINFRINGEMENT. IN NO EVENT SHALL THE AUTHORS OR COPYRIGHT HOLDERS BE LIABLE FOR ANY CLAIM, DAMAGES OR OTHER LIABILITY, WHETHER IN AN ACTION OF CONTRACT, TORT OR OTHERWISE, ARISING FROM, OUT OF OR IN CONNECTION WITH THE SOFTWARE OR THE USE OR OTHER DEALINGS IN THE SOFTWARE.

zlib

Copyright (C) 1995-2011, 2016 Mark Adler

The 3-Clause BSD License

SPDX short identifier: BSD-3-Clause

Redistribution and use in source and binary forms, with or without modification, are permitted provided that the following conditions are met:

1. Redistributions of source code must retain the above copyright notice, this list of conditions and the following disclaimer.
2. Redistributions in binary form must reproduce the above copyright notice, this list of conditions and the following disclaimer in the documentation and/or other materials provided with the distribution.
3. Neither the name of the copyright holder nor the names of its contributors may be used to endorse or promote products derived from this software without specific prior written permission.

THIS SOFTWARE IS PROVIDED BY THE COPYRIGHT HOLDERS AND CONTRIBUTORS "AS IS" AND ANY EXPRESS OR IMPLIED WARRANTIES, INCLUDING, BUT NOT LIMITED TO, THE IMPLIED WARRANTIES OF MERCHANTABILITY AND FITNESS FOR A PARTICULAR PURPOSE ARE DISCLAIMED. IN NO EVENT SHALL THE COPYRIGHT HOLDER OR CONTRIBUTORS BE LIABLE FOR ANY DIRECT, INDIRECT, INCIDENTAL, SPECIAL, EXEMPLARY, OR CONSEQUENTIAL DAMAGES (INCLUDING, BUT NOT LIMITED TO, PROCUREMENT OF SUBSTITUTE GOODS OR SERVICES; LOSS OF USE, DATA, OR PROFITS; OR BUSINESS INTERRUPTION) HOWEVER CAUSED AND ON ANY THEORY OF LIABILITY, WHETHER IN CONTRACT, STRICT LIABILITY, OR TORT (INCLUDING NEGLIGENCE OR OTHERWISE) ARISING IN ANY WAY OUT OF THE USE OF THIS SOFTWARE, EVEN IF ADVISED OF THE POSSIBILITY OF SUCH DAMAGE.